

# An introduction to AW Cadet Training in the Merchant Navy



**The opportunities are endless...**

# Trainee Officer (Cadet) training in the British MN

- AW Crewing Services 'AWCS' provides the opportunity to train in three disciplines in the Merchant Navy
- You will enjoy a unique experience while training for a professional marine qualification with the opportunity to see the world
- You will experience a mix of study at a nautical college in the UK with practical training at sea on our training ships
- You will qualify with an internationally recognised maritime qualification allowing you to work all over the world both at sea and ashore
- As a fully sponsored UK cadet all your study fees and expenses whilst in training will be met by your sponsor who will also pay you a monthly training allowance

**We offer excellent training opportunities to our Cadets allowing them to reach their potential and achieve their goals in the Merchant Navy**



# Our people



## **Tanya Price**

Cadet Manager, AW Crewing Services Limited

Tanya has 20+ years experience in crew management and brings a wealth of experience to the management of our Cadet programmes on behalf of our sponsoring companies. Tanya has strong links to the network of maritime colleges around the UK and manages our bi-annual cadet intake requirements.

Contact details:

Email: [tp@awcrewing.com](mailto:tp@awcrewing.com) Tel. +44 (0) 1624 621128



## **Bryan Hampson**

Director, AW Crewing Services Limited

Bryan leads the management of AW Crewing Services, including contract management, Marine Labour Convention compliance, industrial relations, union negotiations and marine human resources. He began his maritime career with the Bibby Line Group in 1996.

Contact details:

Email: [bh@awcrewing.com](mailto:bh@awcrewing.com) Tel: +44 (0) 1624 621130

# Cadetship Training programmes

- Deck Cadet Training
- Engineer Cadet Training
- Electro-Technical Officer Training



**We're not an off-the-shelf training provider. We work with you, your Sponsor and the College to make sure you get the best out of your Cadetship**



# Cadetship Entry Requirements



**The opportunities are endless...**

# Programme Entry Requirements

There is a mix of academic entry requirements as well as being physically fit. There are additional eyesight requirements for Deck candidates. A career in the Merchant Navy if you apply yourself correctly can be extremely rewarding.

The minimum entry requirements are set by the MNTB/MCA and include the following:-

**Foundation Degree:** A-level or equivalent with min of 48 UCAS points plus at least 4 GCSE's min Grade 5, including Maths (grade 6 or better), English and Science

**Higher National Diploma:** GCSE level or equivalent with at least 4 GCSE's min Grade 5, including Maths, English and Science least plus a relevant Level 3 NC/Diploma in Engineering or Science designed to support higher national level study

**L3-HND:** GCSE level or equivalent with at least 4 GCSE's min Grade 5, including Maths, English and Science

Our cadet recruitment team will work with you during every stage of the process to ensure you make the right choices starting with academic entry level and discipline



# Medical & other Entry criteria

**All candidates for a modern MN cadetship must be in good health and pass a Statutory MN medical examination called the 'ENG1' prior to commencement of any training. Further details are available upon request or from MSN1839.**

## Eyesight requirements:

- All candidates must meet the specific eyesight requirements which are different for Deck, Engineering and ETO cadets.

## Nationality:

- You must be a member of the EEA/passport holder and be ordinarily resident in the UK for a minimum of 12 months prior to the commencement of any cadetship

## Age:

- There are no upper age restriction, however, all candidates must be at least 16 years old prior to the commencement of any training and 18 years old prior to their first sea-phase.

**We take a hands-on, personalised approach to ensure you get the support needed during your cadetship you have the foundation to enjoy along successful career in the merchant navy**



# Training Programme – framework

There are a total of 5 alternating college and sea-phases as per below (duration varies per college and per discipline):

- Phase 1 (at college): 15/20 weeks approx.
- Phase 2 (at sea): 4-6 months approx.
- Phase 3 (at college): 30 weeks approx.
- Phase 4 (at sea): 4-6 months approx.
- Phase 5 (at college): 15/20 weeks approx.

For Deck cadetship a min of 12 months se-service is required with 6 months of this being watch-keeping. For Engineering and ETO cadetships a minimum of 8 months sea-time is required.

- Start dates or intakes each year are in January and September respectively and all cadetships are a min 3-year duration.





# Training programme (cont.)

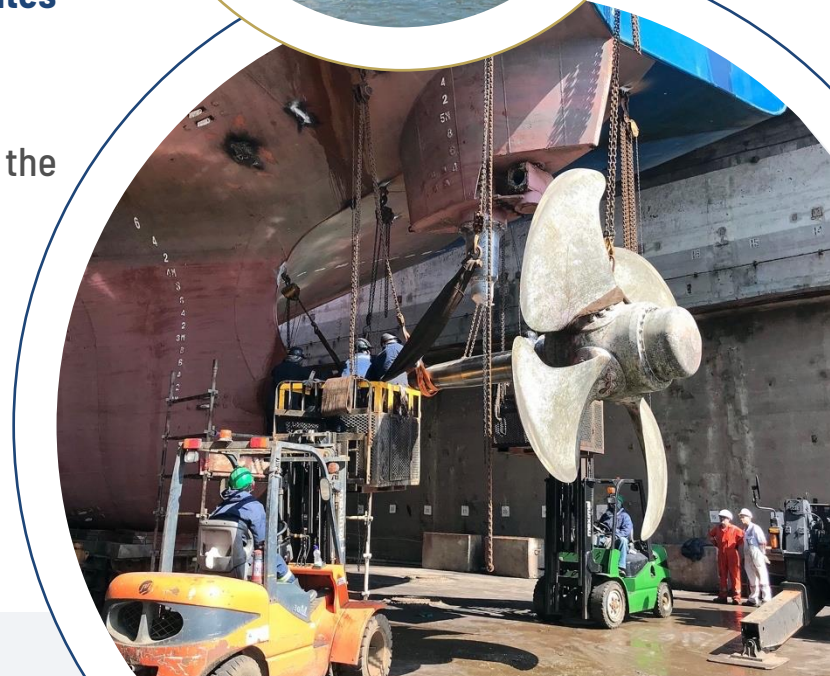
**All shore-side training during 'college' phase is undertaken at one of the MCA approved Nautical Colleges around the UK.**

**Training is in-line with MNTB requirements and all candidates follow the Training Record Book approach.**

**All programmes are MCA/MNTB approved.**

Typical Nautical colleges include but and not limited to the following:-

- Warsash Maritime Academy
- Fleetwood Nautical College
- Glasgow Nautical College
- South Tyneside College



# Studying at College

**Whilst in college study will mainly be classroom based. This will involve structured lectures, tutorials and practical work. You will also be required to undertake a considerable amount of self-study. There will be deadlines to meet and its critical that you meet these.**

- Assessments will be both written exams and assignment based.
- Your sponsor will receive monthly college reports covering attendance and attainment.
- During phase 1 you will be expected to stay in the halls of residence on campus
- You sponsor will cover the first three month's accommodation costs in phase 1 after which you will be required to cover these costs from your monthly training allowance



# Training ships

**All vessels used for sea-phases must be approved by the MCA as a recognized training vessel for UK Trainee Officers.**

**We only use vessels of UK or EU flag which are owned and managed by our Group companies, the class of vessels we use include:-**

- General cargo
- Bulk Carriers
- Ro-Ro

**AW has access to a number of excellent well managed ships within our own Group to use for Cadet sea-phases**





# Post cadetship – the next step;

Once qualified as an 00W (Deck), 00W (Eng) or ETO you can expect to;

- Earn anything from £30,000 to £35,000 p.a.
- Commence as career at sea in the capacity of Third Officer, Fourth Engineer or Junior ETO
- Start gaining valuable sea-going experience
- Build up sea-time required in order to return to college for next level Certificate of Competency (not applicable to ETO candidates)

AW manages a fleet of all British Officers and can offer employment opportunities post cadetship to the right candidates for which to start their sea-going career





# Training Allowance from Sponsor

**Training allowance is paid monthly by your sponsor for the full 36 months of your cadetship.**

- Training Allowance is the same payment each month to allow you to plan your finances
- Allowances are paid monthly in area and pro-rated for month 1
- Allowances are in the region of GBP£187 per week
- Allowances are paid GROSS free of any deductions for Tax and social security payments
- Training Allowance is paid monthly into your nominated account
- Allowances are paid in GBP only
- Allowances may be subject to on board deductions for example cash advances, canteen purchases etc

**AW reviews the market on a regular basis to ensure the training allowance and terms of training remain competitive and in-line with market indicators**



Who we work with  
(our Clients)

HURST POINT

**The opportunities are endless....**



# Foreland Shipping: full technical services for the MOD ro-ro fleet

- Foreland owns and operates four ro-ro vessels on behalf of the UK MOD, deployed in the Atlantic, Mediterranean, Northern Europe, the Baltic Sea and Indian Ocean.
- With an emphasis on security and maximising availability to support strategic MOD operations, AW Ship Management (AWSM) provides full technical management for the vessels including crewing.
- AWSM were recently commissioned to manage a tender process for Special Survey Dockings and a bridge refit across the four vessels in line with Lloyd's Register requirements. Our team developed the technical survey specifications and managed a competitive yard tender process.
- Shortlisted yards were assessed in person by the AWSM team with recommendations put to Foreland, based on both cost and minimising disruption to the vessels' long-term MOD contracts. Works were completed on time and to budget to the satisfaction of Class, Flag and the owners.



# Hadley Shipping: supporting a leading British ship owner

- Hadley Shipping Group operates one of the few remaining family owned British Shipping companies in the UK
- The Group continues to add growth and expansion into the shipping sector following the introduction of a new ship into the fleet during 2019, the Malta registered 82,060 Dwt Cotinga
- The Company has mainly been involved in the operation of Bulk Carriers in the Panamax market and latterly in the container market
- The current Fleet consists of four Bulk Carriers and one Container Ship
- The ship's operator on the spot market and trade worldwide
- Vessels are registered with the Malta, Marshall Islands and Isle of Man registries respectively
- All ships in the Hadley Fleet are acceptable to AW for cadet training berths





# MV Helena: a vital service for the South Atlantic

- For over 15 years, AW Ship Management (formerly Andrew Weir Shipping) provided full technical management, cargo, passenger and crewing services for RMS St Helena, the only freight and passenger service connecting the UK, Cape Town, St Helena and Ascension Island.
- With the RMS St Helena's retirement upon the opening of a new airport, we developed a business case for the Government of St. Helena for a fixed-schedule cargo service from Cape Town to St Helena and Ascension Island.
- Our team identified three vessels, carrying out ship surveys before putting forward our recommendation. AW now operates the service on behalf of the St Helena Government.
- A lifeline for the islands, maximising the vessel's operational efficiency is critical to its success.



# Why choose AW for a Cadetship?

- We are a relatively small Training Provider with an annual intake of approx. 6 cadets, therefore, we ensure a one-to-one training approach and know all our Trainees by their Christian names
- All sea-phases are on Group owned or managed vessels
- We ensure approx. 50% of the required sea-time is on vessels with full British crew
- We have a cadet success rate of 100%
- We give all our qualified cadets a trip in the substantive rank once they have obtained their CoC
- We are able to give 90%+ of our cadets jobs at the end of their 3-year cadetship (last 2 years we have achieved 100% success rate)



# Get in touch

---

Tanya Price

[tp@awcrewing.com](mailto:tp@awcrewing.com)

AW Crewing Services Limited

Britannia House, Athol Street

Douglas

Isle of Man

IM1 1JD

[www.awcrewing.com](http://www.awcrewing.com)

T: +44 (0) 1624 621132



**Your ships. Our people.**